



iF

Series

ANSI Grade 1

Touchless Smart Lock

Mobile Biometrics Access Control

iF-90/94 Mortise Lock

iF-90/94 Mortise Lock



Outside View



Inside View

Your solution for stronger and more versatile security -

Wide range of decorative trims available to accommodate high security need

Enhanced Security with Stylish Beauty

When it comes to strength and security, a mortise lock is one that cannot be matched, with its robust mechanical design and an optional auxiliary deadbolt for added strength and security, bringing you the highest level of security and ease of mind.

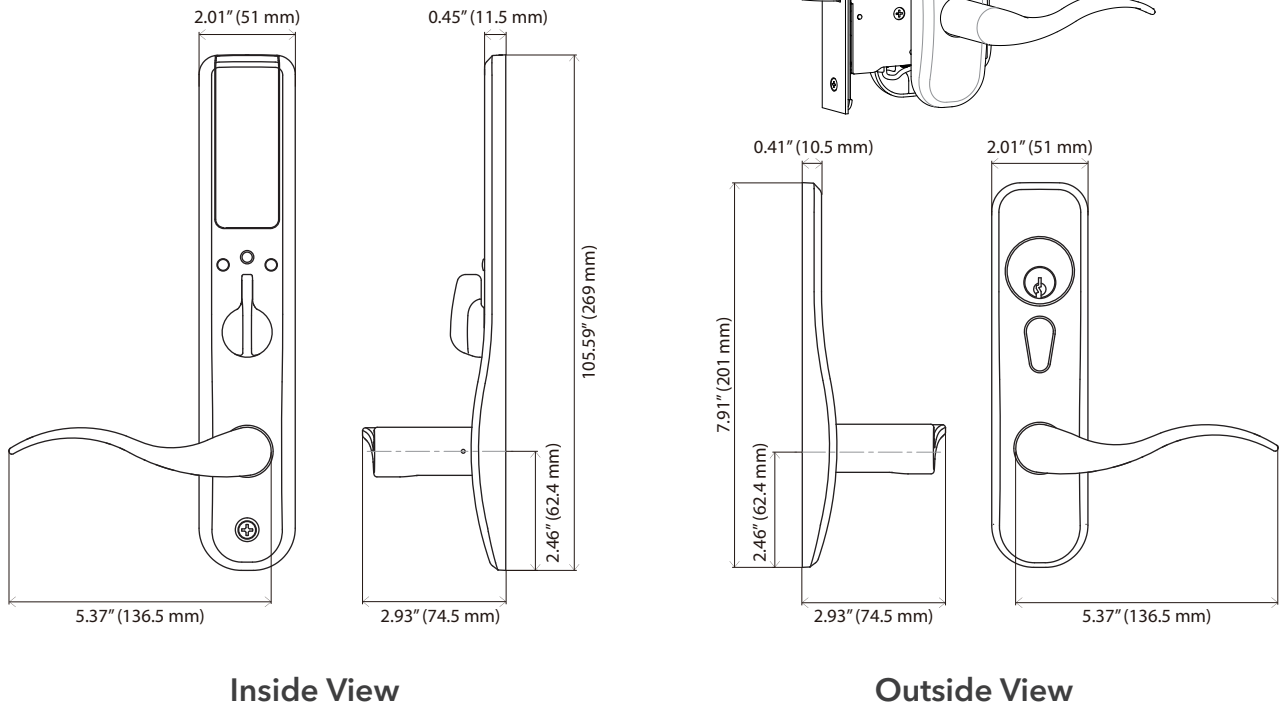
The iF-90/94 model uses an ANSI/BHMA Grade 1 mortise lock, which can withstand the strictest of forcible entry attempts without failure. It is battery powered by 4 AA alkaline batteries, with an expected battery lifespan of up to one year. The battery case is embedded in the door, making its overall aesthetic design much thinner and elegant to complement your decorative needs.

Electronic Specifications

	Battery Type	Low Voltage Type
Required Power/ Control Mode	<ul style="list-style-type: none"> Battery Life: Estimated 1 year or 5000 cycles with 4 AA alkaline batteries. 	<ul style="list-style-type: none"> Power Input: 12 or 24 VDC. 2 Types of Output Options. Energized Circuit (Output = Input; Current: MAX 1.5A). Electrical Circuit (COM, NO/NC).
No. Users	<ul style="list-style-type: none"> Unlimited, dependent on smartphone's memory capacity. 	
Management	<ul style="list-style-type: none"> Can assign secondary administrators for unlimited or 3-5 users using the user management interface. 	
Credential Verification Time	<ul style="list-style-type: none"> <1s (without facial recognition). Note: Depending on the smartphone used, the actual connectivity during operation may differ. 	
Visual Communications	<ul style="list-style-type: none"> LED. 	
Communication Standards	<ul style="list-style-type: none"> Wifi. 3G/4G/5G. Bluetooth 4.0. 	
Encryption	<ul style="list-style-type: none"> AES 256-bit. 	
Communication Range	<ul style="list-style-type: none"> 2m. 	
Wake-Up on Radio	<ul style="list-style-type: none"> 1s by Bluetooth connection or Inside button. 	
Data Rate	<ul style="list-style-type: none"> <100kb via Wifi, 3G/4G/5G. 	
Connectivity Options	<ul style="list-style-type: none"> Web portal management platform (manage authorization, authorization updates, biometric/non-biometric requirement). Wifi access point (real-time communication). Telecom signal (3G/4G/5G) (real-time communication). 	
Non-Biometric/ Biometric Recognition	<ul style="list-style-type: none"> Passcode, fingerprint, facial recognition, IRIS recognition (future feature), voice recognition (future feature). 	
Operating Temperature	<ul style="list-style-type: none"> 0~49 °C. 	
Operating Humidity	<ul style="list-style-type: none"> 85%. 	
Certification/Compliance	<ul style="list-style-type: none"> ANSI/BHMA A156.25 UL294 for Access Control System Units. CAN/ULC-60839 for Electronic Access Control Systems. FCC Part 15 Industry Canada (IC) Certification. 	
Available Status Signals	<ul style="list-style-type: none"> Request-to-exit. Battery status/low battery alert. HOLD OPEN mode (constantly unlocked until reset back to standard mode). PRIVACY mode (all users' access denied until reset back to standard mode or when turning inside lever; administrator can access normally). Communication status. 	
Flexible Solutions	<ul style="list-style-type: none"> Smartphone. Tablet. Web portal via PC. 	
Mobile App	<ul style="list-style-type: none"> Add and configure locks. Add new users and enroll credentials. View users and alerts. Perform lock diagnostics. Requirements: IOS 9 or later Android 4.4 or later. Standard Authentication: Passcode OR the user mobile device's biometric recognition function. Dual Authentication: The standard authentication AND the Smartlink App's facial recognition. User feedback. 	
Web Portal	<ul style="list-style-type: none"> Configure locks. Add new users and enroll credentials. View audits and alerts. Setup facial recognition requirement for access. Preserve for security camera/ online alerts connection port. 	<ul style="list-style-type: none"> Requirements: <ul style="list-style-type: none"> » IE 11.1 or later. » Chrome 38.0 or later. » Firefox 33.0 or later. » Safari for Mac OS X10 or later. » Mobile/tablet browser for Android and iOS.

Mechanical Specifications

iF-90/94 Mortise Lock



Inside View

Outside View

Certification/Compliance	<ul style="list-style-type: none">• ANSI/BHMA A156.13 Series 1000, Grade 1 operational and security.• UL Listed for 3-Hour fire rating.
Doors & Preparations	<ul style="list-style-type: none">• Conforms to ANSI A115.1, through bolted installation.
Case Size	<ul style="list-style-type: none">• 4-5/16" x 6" x 1" (110mm x 152mm x 25mm).
Armor Front	<ul style="list-style-type: none">• 1-1/4" x 8" x 7/32" (32mm x 203mm x 5mm) Standard, 1-1/16" x 8" x 7/32" (27mm x 203mm x 5mm) optional.
Backset	<ul style="list-style-type: none">• 2-3/4" (70mm) only.
Door Range	<ul style="list-style-type: none">• 1-3/8" (35mm) ~ 2-1/2" (64mm) metal door.• 1-3/4" (45mm) ~ 2-1/2" (64mm) wood door.
Beveled Doors	<ul style="list-style-type: none">• Self-adjusting case.
Spacing	<ul style="list-style-type: none">• 3-5/8" (92mm) center cylinder to spindle. 2-7/16" (62mm) center thumbturn to spindle.
Deadbolt	<ul style="list-style-type: none">• 1" (25mm) throw, stainless steel.
Latchbolt	<ul style="list-style-type: none">• 3/4" (19mm) throw, with anti-friction tongue, all stainless steel.
Deadlocking Bar	<ul style="list-style-type: none">• Non-handed, stainless steel.
Case Handling	<ul style="list-style-type: none">• Field reversible without removing case.
Through Bolts	<ul style="list-style-type: none">• Through-bolted trim self-aligned with lock case.
Strikes	<ul style="list-style-type: none">• Curved lip is non-handed. Custom lip lengths at 1/8" (3mm) increments available.
Spindles	<ul style="list-style-type: none">• Breakable to prevent the lock case from unlocking or being damaged.
Cylinder	<ul style="list-style-type: none">• 6-pin standard, with two nickel silver keys, "C" keyway. Can be masterkeyed or grand masterkeyed. Construction key system available.
I/C Core	<ul style="list-style-type: none">• 6 or 7-pin. Compatible with Best® and Falcon® original cylinder.
Fasteners	<ul style="list-style-type: none">• Concealed under the escutcheon.

Mortise Lock Miscellaneous

Trims

We offer a wide selection of sectional and escutcheon trim designs that are not only providing strength and durability, but also portray elegance and style.

In Klaccki, durability and beauty go hand by hand. Be assured that you are entrusted with products that meet the strictest standards for safety, security and performance, while bringing an exquisite touch to your decoration with their aesthetically pleasant design.

When ordering, combine the letter representing the type of handle with the number for the type of cylinder. E.g.: K4 stands for K type Lever handle with I/C core cylinder for escutcheon trim.

Knobs



P



B



T

Note: For iF-R9 only.

Levers



D



Q



K



EU



MR



KA



AH



HA*



BF*

* Specify door handing.

Note: Roses are not included in iF-90/94 models.

Decorative Trims

All roses and levers are factory customized to their aesthetic matches. For different rose and lever combination, specify by referring to the names of the rose and lever. E.g.: PT refers to the combination of PT lever and PT rose. PTTG refers to custom selected PT lever with TG rose.

Levers



PT



TG



RT



RD



CR



SR



SQ

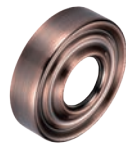
Roses



PT



TG



RT



RD



CR




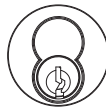

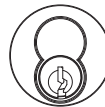
SR



SQ

Note: For iF-R9 only.

Cylinders

	Sectional Type		Escutcheon Type	
				
	Full-face Standard (#1)	Full-face I/C Core (#2)	Full-face Standard (#3)	Full-face I/C Core (#4)
iF-R9 Series Facial Recognition Smart Lock	✓	✓		
iF-90/94 Series Facial Recognition Smart Lock			✓	✓

Finishes

A wide selection of finishes are available to match with your door and other hardware.



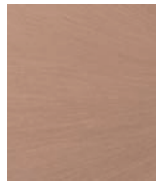
605 (US3)
Polished Brass



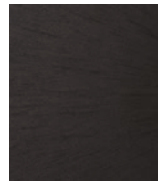
606 (US4)
Satin Brass



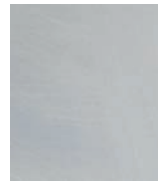
611 (US9)
Polished Bronze



612 (US10)
Satin Bronze



613 (US10B)
Dark Oxidized
Satin Bronze



625 (US26)
Polished
Chrome



626 (US26D)
Satin Chrome



Safe to Touch

Why Anti-Microbial?

Every day we touch things that reside germs, bacterial and viruses. In fact, the touching surface of door hardware in high traffic and public use areas fabricates a perfect environment for harmful microbial to cultivate. Infections of the harmful microbial have becoming a rising public safety concern especially in sensitive industries, such as healthcare facilities and educational institutions.

What is Anti-Microbial?

Studies found that germs, bacterial and viruses can thrive from hours to days on surfaces like stainless steel or any other type of metals. The anti-microbial coating applied on the frequent touch surface of a door hardware which can slow or inhibit the growth of bacteria making the environment safer for everyone. The Anti-Microbial option are offered to a wide range of Klacci products available with different functions and finishes.

Anti-microbial Coating

An optional anti-microbial coating can be applied. Specially formulated to prevent bacterial growth on door handle surface. Suitable for high-traffic applications in high-sanitary demanding locations. To order, add prefix AC.

Note: The anti-microbial coating is tested in laboratory. It should not be considered as a substitute for proper hand hygiene and other guidelines recommended by The Centers for Disease Control and Prevention (CDC). Klacci makes no representations or guarantees on the effects of the anti-microbial coating when used in different environments.